



UMBACO LANDSCAPE ARCHITECTS  
LANDSCAPE MASTER PLAN  
ST YOSIP PARISH  
CHURCH, HALL AND EARLY LEARNING CENTRE

CONCEPT PROPOSAL

TABLE OF CONTENTS  
DA PROPOSAL  
DA PROPOSAL  
ELEVATIONS  
ELC OUTDOOR AREA  
PROPOSED PLANT SPECIES

SK01  
SK02  
SK03  
SK04  
SK05  
SK06

LEGEND

- ← — → VEHICULAR FLOW  
◀ PEDESTRIAN ACCESS TO THE SITE



1. View along western boundary at Cabbage Gum over to neighbouring property.



2. View towards the western boundary with Cabbage Gum in background and Claret Ash.



3. View towards existing small fruit orchard.



4. Dwyer Road east view.



5. View at group of Lemon Scented Gums on the north boundary.





## LANDSCAPE PRINCIPLES

- 1 A civic plaza space is defined by the Church and the Multipurpose Hall. The seating pod elements are arranged to provide communal gathering and to encourage conversation. Undercover atrium is enhanced by plant trellises trailing from the ceiling.
- 2 The community garden zone will be accessed through accessible walkway from Church Plaza. This space, which includes a vegetable and herb garden will provide opportunity for communal events empowering sense of community.
- 3 The Early Learning Centre outdoor play area accommodates for nature based play with gross motor skill area located adjacent to the building. Natural elements including a sandpit and balance beams are located along the perimeter. Here the terraced terrain allows for sliding, climbing or crawling opportunities. Mud kitchen, blackboards and other interactive elements are placed against the higher perimeter garden walls. A small central bridge divides the 'nature play' area and artificial softfall surface adjoining the building. Perfumed, textured and flowering plants species will be used throughout. Shade trees will provide for environmental comfort while a large canopy structure will offer instant shade. A couple of cubby houses will also offer opportunity for a group play sheltered by the roof and trellises covered with trailing plants.
- 4 Southern perimeter of Dwyer Road street frontage will have a 1.2 m high fence with 900 mm setback from boundary. Dwarf flowering Gum cultivars will be planted along the boundary. Refer to Section 2 on SK03 for more details.
- 5 Vehicular access leads into a perimeter carpark that accommodates disabled parking spaces with new sliding gate at the entry. Substantial shade canopy trees will be planted along perimeter.
- 6 Existing neighbouring vegetation along western and northern boundaries will be protected. Additional plantings of native trees, low shrubbery and grasses will provide sustainable vegetation buffer along carpark perimeter.
- 7 A covered roof top terrace offers play area for nursery children. A sandpit with water play is accessed via series of short ramp and steps, that can be used as seats or smaller stage. Tough and durable plantings are arranged mostly around perimeter in individual troughs and pots that will be irrigated. Variety of nature and custom made play elements will assist in gross motor skills development including rope climbing, timber log balance beams, hanging pods and mud kitchen. Trailing and climbing plants will be planted to roof pots. Variety of underfoot surfaces will stimulate senses such as wet pour rubber, sand, artificial turf, timber deck and pebbles.



1  
-  
TYPICAL LANDSCAPE TREATMENT TO NOISE FENCE & RETAINING WALL  
Section detail Scale 1 : 20

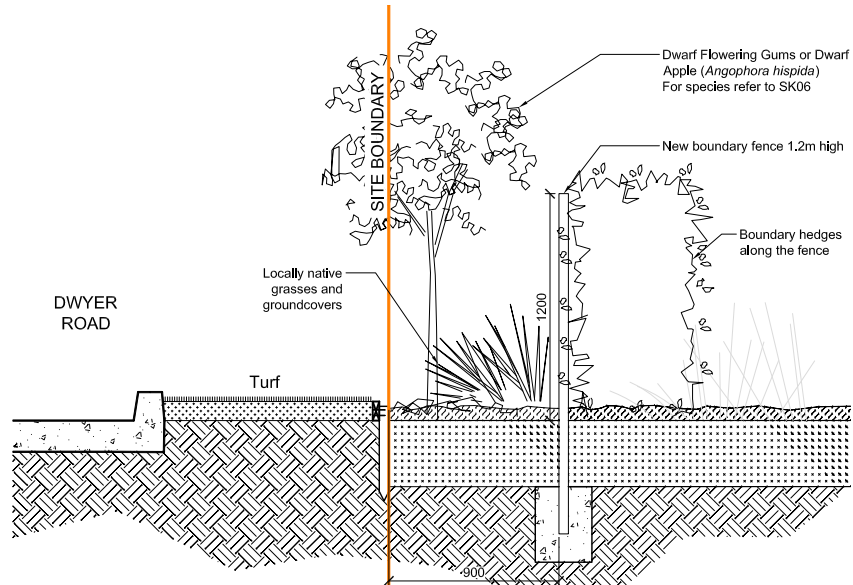
LANDSCAPE PRINCIPLES

- 1 A civic plaza space is defined by the Church and the Multipurpose Hall. The seating pod elements are arranged to provide communal gathering and to encourage conversation. Undercover atrium is enhanced by plant trellises trailing from the ceiling.
- 5 Vehicular access leads into a perimeter carpark that accommodates disabled parking spaces with new sliding gate at the entry. Substantial shade canopy trees will be planted along perimeter.
- 6 Existing neighbouring vegetation along western and northern boundaries will be protected. Additional plantings of native trees, low shrubbery and grasses will provide sustainable vegetation buffer along carpark perimeter.
- 8 A batter ingrades around 1:3 will be treated with hydromulching seed mixture to ensure sustainable vegetation cover.

LEGEND

- EXISTING TREES TO BE RETAINED AND PROTECTED
- PROPOSED LOCALLY NATIVE TREES
- PROPOSED FEATURE AND DECIDUOUS TREES (REFER TO SK07 FOR MORE DETAILS)
- NEW PERIMETER FENCE & SLIDING GATE TO CARPARK (REFER TO DETAIL 2)
- NEW NOISE FENCE TO NEIGHBOURING PROPERTIES (REFER TO DETAIL 2)
- TURF
- GROUNDCOVERS & GRASSES
- FEATURE SHRUBS & HEDGES
- PAVING SURFACES
- EXISTING LEVELS
- PROPOSED LEVELS
- SITE BOUNDARY

SCALE 1:250 @ A0  
0 1 5m 10m 20m



2  
SK02  
TYPICAL LANDSCAPE TREATMENT ON DWYER RD BOUNDARY  
Section detail Scale 1 : 20





WEST ELEVATION FROM CAR PARK

SCALE 1:200 @ A1



Seats in Plaza will be inviting and comfortable.



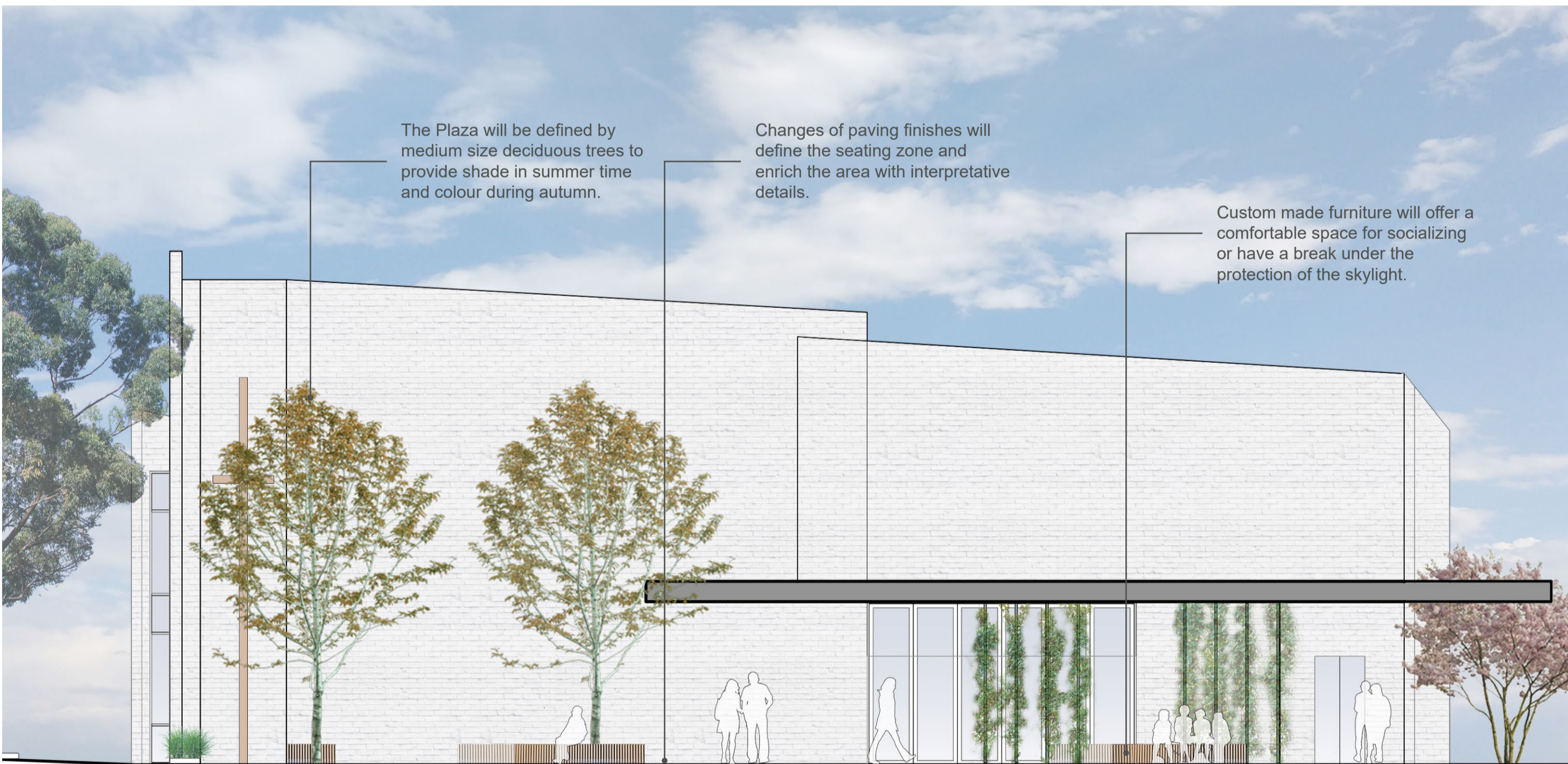
Plaza trees would be placed in tree grates with interpretative opportunities.



Off form concrete walls will complement architecture.



Elevated veggie garden planters can be placed in the community garden.



NORTH ELEVATION

SCALE 1:100 @ A1



Early Learning Centre outdoor play area. View from the west side



Early Learning Centre outdoor play area. View from the south side



Children enjoy crossing bridges



Little pergolas add visual interest as well as provide opportunity to grow climbers



Combination of materials



Child friendly elements



Cubby house can become a playhouse or a retreat



Fun objects and playful elements

NATIVE PARKLAND TREES



Corymbia maculata  
Spotted Gum



Eucalyptus citriodora  
Lemon Scented Gum



Eucalyptus tereticornis  
Forest Red Gum

FEATURE TREES



Pyrus calleryana 'Bradford'  
Bradford Pear Tree



Acer freemanii 'Autumn Blaze'  
Maple 'Autumn Blaze'



Quercus palustris  
Pin Oak



Tristaniopsis laurina luscious  
Water Gum

PROPOSED PLANT SCHEDULE

Botanical Name	Common Name	Size	Height at planting
NATIVE PARKLAND TREES up to 20 m height			
Angophora floribunda	Rough barked Apple	150 L	2.5 m
Eucalyptus amplifolia	Cabbage Gum	150 L	2.5 m
Eucalyptus crebra	Narrow-leaved Ironbark	150 L	2.5 m
Eucalyptus citriodora	Lemon Scented Gum	150 L	2.5m
Eucalyptus tereticornis	Forest Red Gum	150 L	2.5 m
Corymbia maculata	Spotted Gum	150 L	2.5 m
Quercus palustris	Pin Oak	100L	1.8m
FEATURE TREES SMALL /MEDIUM up to 12 m height			
Acer freemanii 'Autumn Blaze'	Maple Autumn Blaze	150L	2.0m
Angophora hispida	Dwarf Apple	45 L	1.2 m
Corymbia ficifolia "Lollypops", "Summer Beauty", "Snow Flake", "Wild Sunset"	Dwarf Flowering Gum cvs	45 L	1.2 m
Eucalyptus citriodora 'Scentuous'	Lemon Scented Gum cv	45 L	1.2 m
Eucalyptus citriodora 'Dwarf Pink'	Lemon Scented Gum cv	45 L	1.2 m
Nyssa Sylvatica	Black Tupelo	100L	1.8m
Pyrus calleryana 'Bradford'	'Bradford' Pear Tree	150L	2.8m
Tristaniopsis laurina 'Luscious'	Water Gum	75L	1.8m
Sapium sebiferum	Chinese Tallow	75L	1.0m
ORNAMENTAL SHRUBS/ FEATURE PLANTS (up to 3 m high)			
Callistemon 'Red Rover'	Bottlebrush	150mm	0.2m
Casuarina glauca 'Cousin It'	Casuarina glauca Cousin It"	200 mm	0.3 m
Doryanthes excelsa	Gymea Lily	300 mm	0.6 m
Grevillea rosmarinifolia 'Crimson Villea'	Grevillea	150mm	0.2m
Kniphophia spp.	Red Hot Poker	150mm	0.3 m
Loropetalum chinense 'Purple Pixie'	Chinese Fringe Flower - dwarf	200 mm	0.3 m
Philodendron Xanadu	Dwarf Philodendron	200 mm	0.4m
Macrozamia communis	Burrawang	300mm	0.6m
Melaleuca thymifolia 'Purple Lace'	Honey Myrtle	150 mm	0.3m
Murraya paniculata	Orange Jessamine	150 mm	0.3m
Syzygium australe	Lilly-pilly	150 mm	0.4m
Westringia fruticosa 'Grey Box'	Dwarf Coastal Rosemary	200 mm	0.3 m
GROUNDCOVERS /GRASSES/NATIVE GRASSES			
Dianella caerulea 'Lucia'	Blue Flax Lily	150 mm	0.2 m
Dilwynia sieberi		100mm	0.2 m
Einadia hastata	Berry Saltbush	100mm	0.2 m
Lomandra Tanika	Dwarf Lomandra	100mm	0.2 m
Microlaena stipoides	Weeping Grass	100mm	0.2 m
Liriope muscari 'Isabella'	Lillyturf	150mm	0.2 m
Juniperus conferta	Shore juniper	150mm	0.2 m
Myoporum parvifolium 'Yareena'	Creeping Boobiala	150mm	0.3 m
Rosmarinus officinalis 'prostrate'	Prostrate Rosemary	150 mm	0.3 m
Themeda australis	Kangaroo Grass	100mm	0.2 m

FEATURE PLANTS



Macrozamia communis  
Burrawang



Doryanthes excelsa  
Gymea Lily



Kniphophia spp.  
Red Hot Poker



Melaleuca thymifolia 'Purple Lace'



Sapium sebiferum  
Chinese Tallow

ORNAMENTAL SHRUBS



Santolina chamaecyparissus 'Nana'  
Cotton Lavender



Westringia fruticosa 'Mundi'  
Dwarf Coastal Rosemary



Callistemon 'Green John'  
Dwarf Bottle Brush



Isolepis nodosa  
Knobby Club Rush



Hardenbergia violacea  
False Sarsaparila

NATIVE GRASSES AND GROUNDCOVERS



Dianella caerulea  
Blue Flax Lilly



Microlaena stipoides  
Weeping Grass



Juncus usitatus  
Common Rush



Lomandra Tanika  
Dwarf Lomandra



Themeda australis  
Kangaroo Grass